

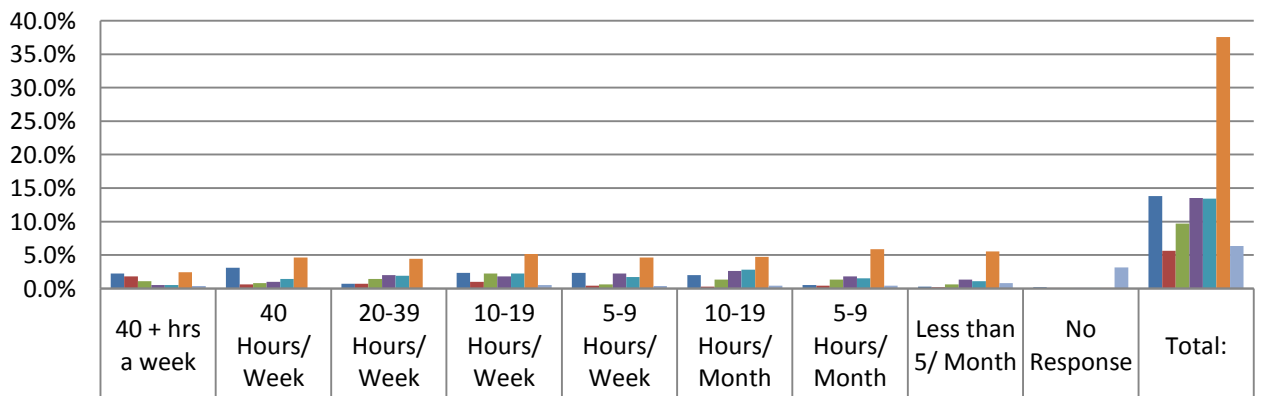
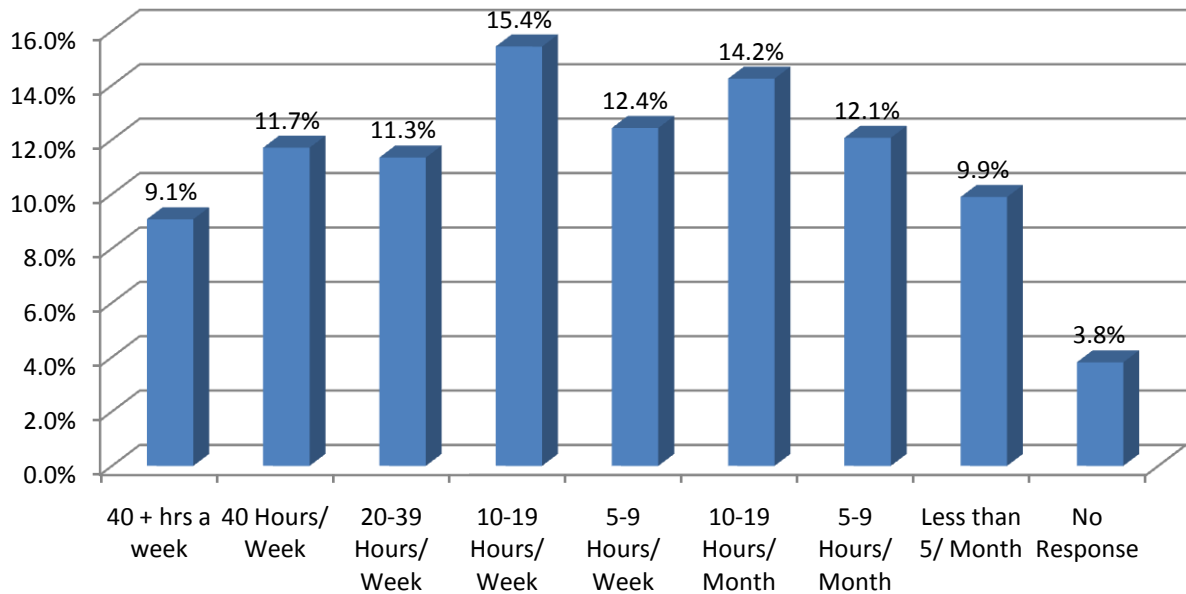
Texas Municipal Courts Education Center

12 Hour Judges Survey

1,102 Total Surveyed

Question1: How much time do you spend working as a judge?

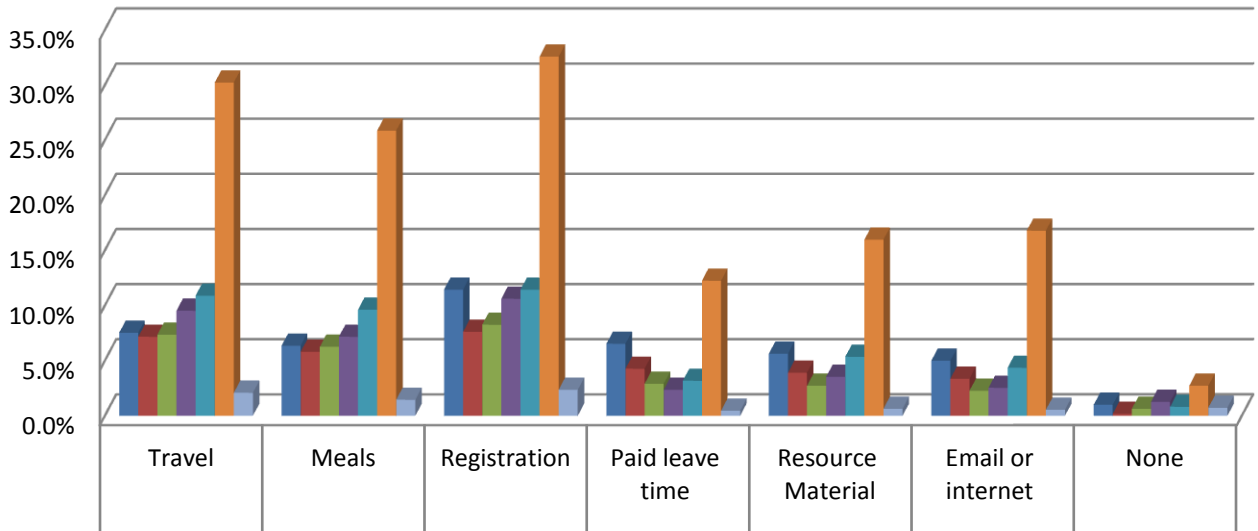
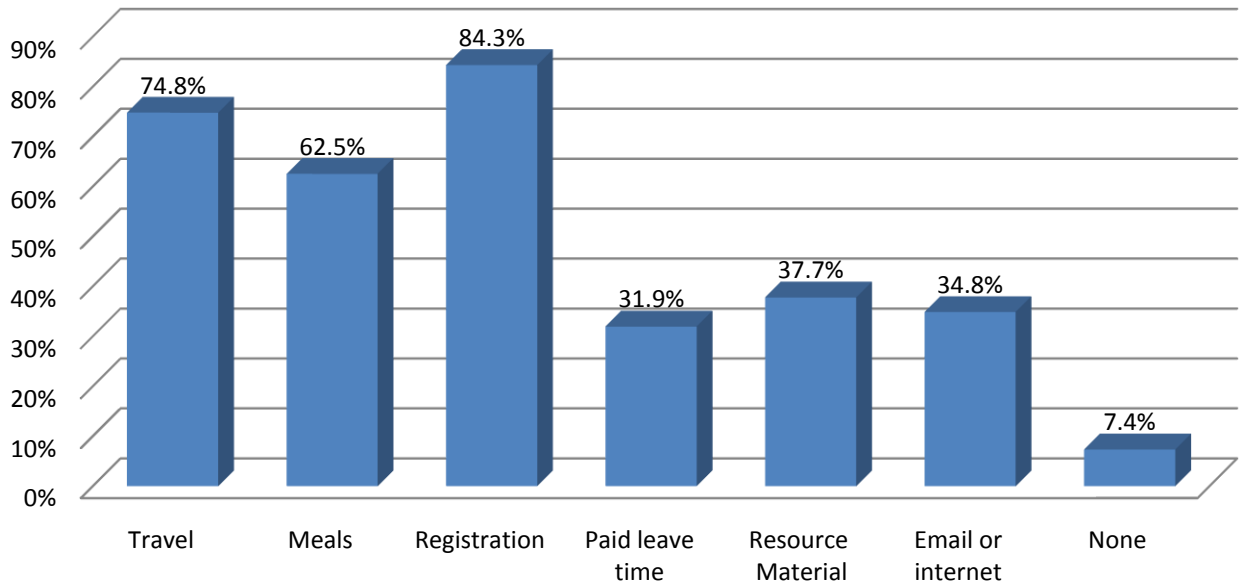
40+ Hours/Week	9.1%	100
40 Hours/Week	11.7%	129
20-39 Hours/Week	11.3%	125
10-19 Hours/Week	15.4%	170
5-9 Hours/Week	12.4%	137
10-19 Hours/Month	14.2%	157
5-9 Hours/Month	12.1%	133
Less than 5/Month	9.9%	109
No Response	3.8%	42



Mega	2.3%	3.1%	0.7%	2.4%	2.4%	2.0%	0.5%	0.3%	0.2%	13.8%
High	1.8%	0.6%	0.7%	1.0%	0.5%	0.3%	0.5%	0.2%	0.1%	5.6%
Large	1.1%	0.8%	1.5%	2.3%	0.6%	1.4%	1.4%	0.6%	0.1%	9.7%
Medium	0.5%	1.0%	2.0%	1.8%	2.3%	2.6%	1.8%	1.4%	0.1%	13.5%
Small	0.5%	1.5%	1.9%	2.3%	1.7%	2.8%	1.5%	1.1%	0.1%	13.4%
Low	2.5%	4.6%	4.4%	5.2%	4.6%	4.7%	5.9%	5.5%	0.1%	37.6%
Uncategorized	0.4%	0.1%	0.1%	0.5%	0.4%	0.5%	0.5%	0.8%	3.2%	6.4%

Question 2: What financial support does your city offer you to support your continuing judicial education?

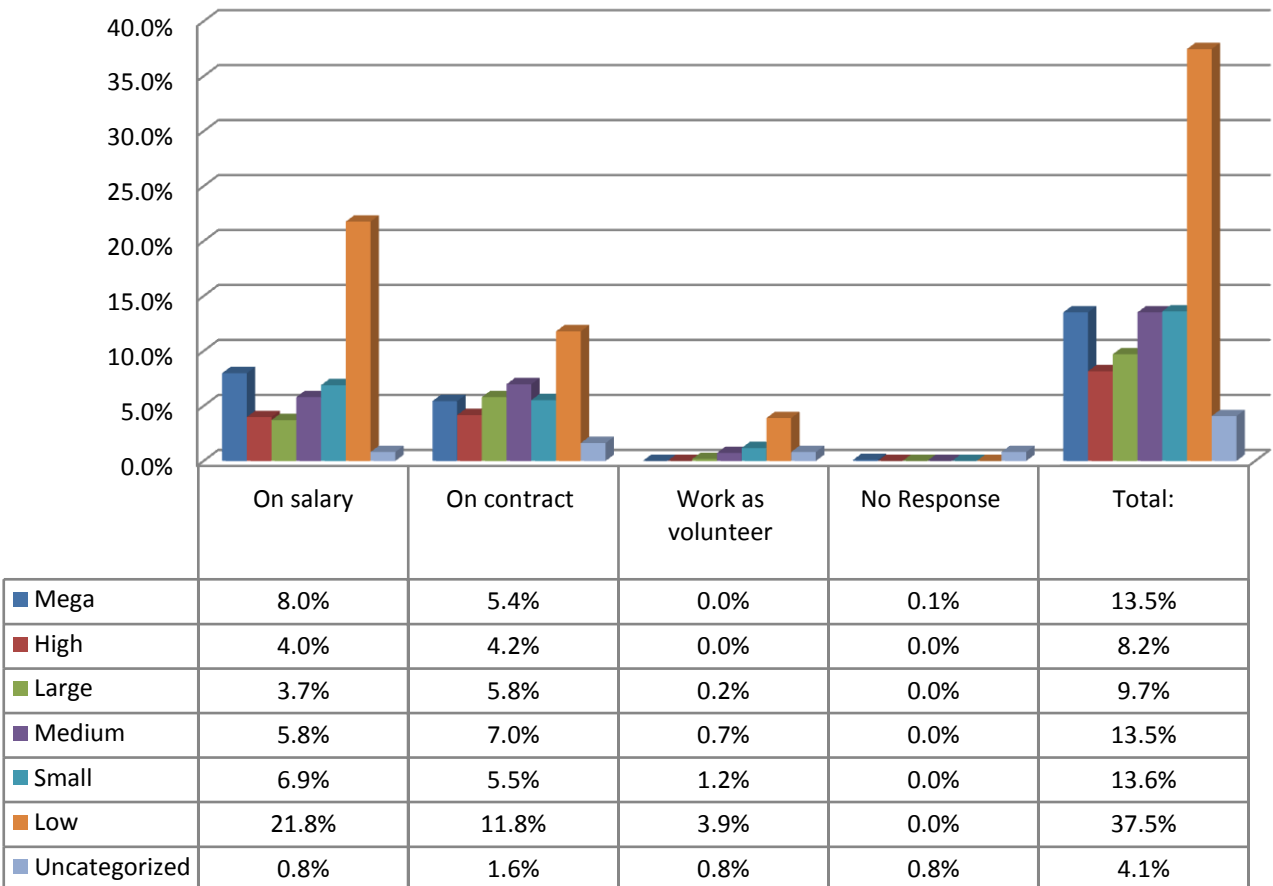
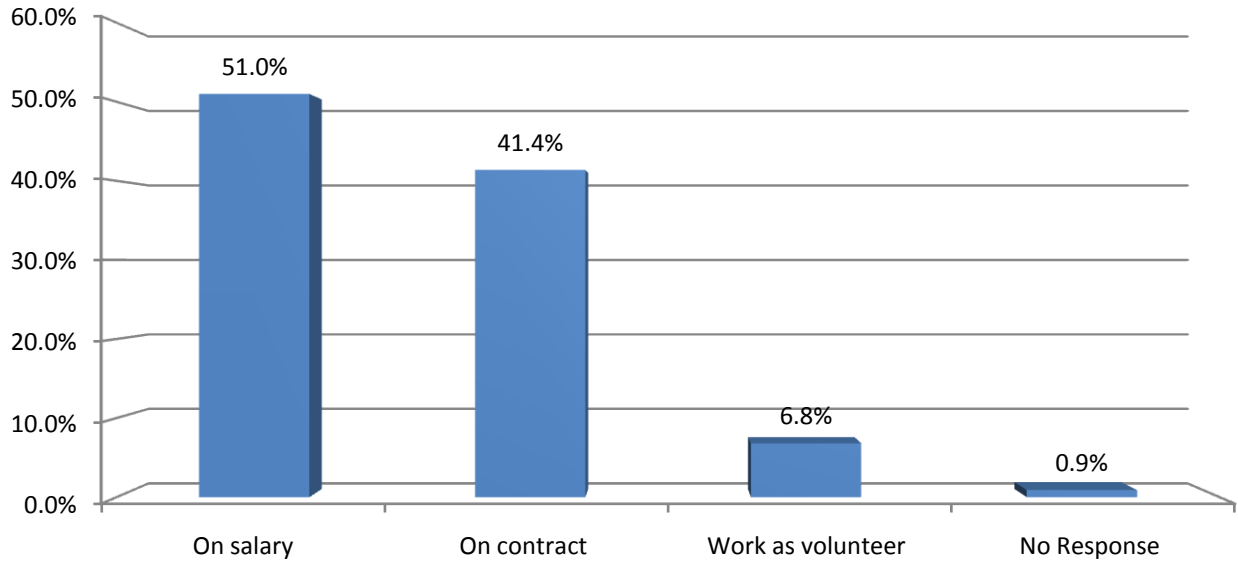
Travel to Seminar	74.8%	824
Meals to and at seminar	62.5%	689
Registration fees	84.3%	929
Paid leave time	31.9%	352
Law books and resource materials	37.7%	416
Email or internet access	34.8%	384
None	7.4%	81



	Travel	Meals	Registration	Paid leave time	Resource Material	Email or internet	None
Mega	7.5%	6.4%	11.4%	6.5%	5.6%	5.0%	1.0%
High	7.2%	5.8%	7.6%	4.3%	3.9%	3.4%	0.2%
Large	7.4%	6.3%	8.3%	2.9%	2.7%	2.3%	0.6%
Medium	9.5%	7.2%	10.6%	2.4%	3.5%	2.5%	1.3%
Small	10.9%	9.6%	11.4%	3.2%	5.4%	4.4%	0.8%
Low	30.2%	25.9%	32.6%	12.3%	16.0%	16.8%	2.7%
Uncategorized	2.1%	1.5%	2.4%	0.5%	0.6%	0.5%	0.7%

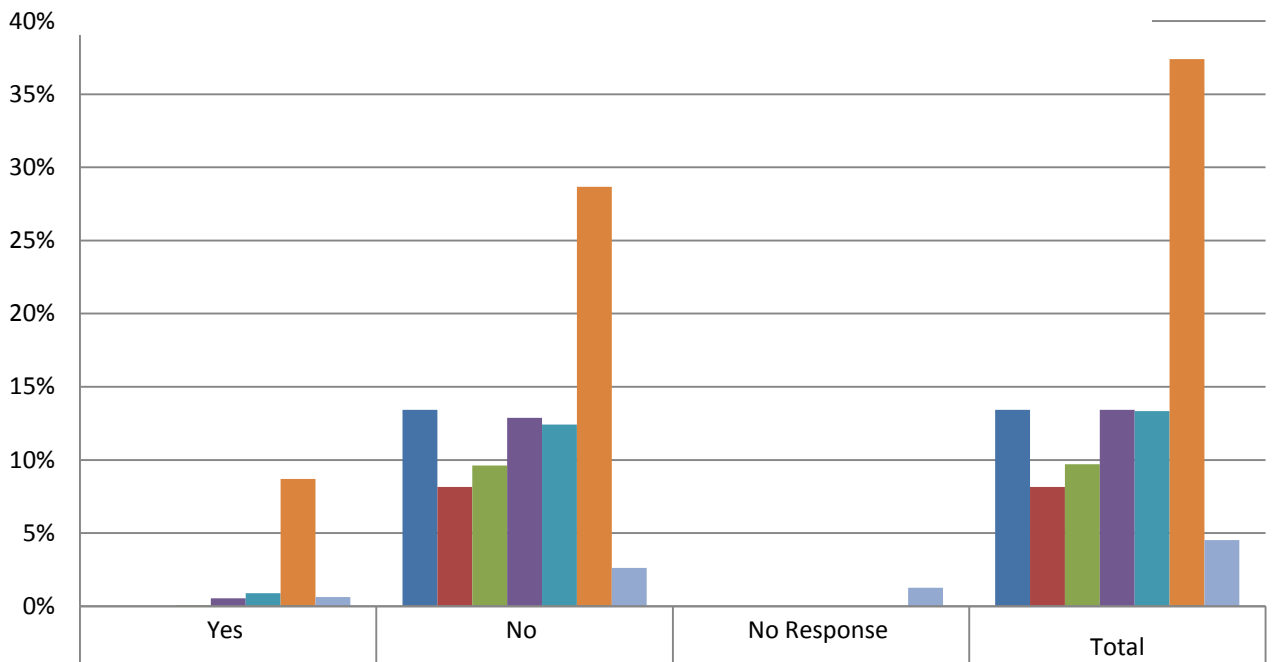
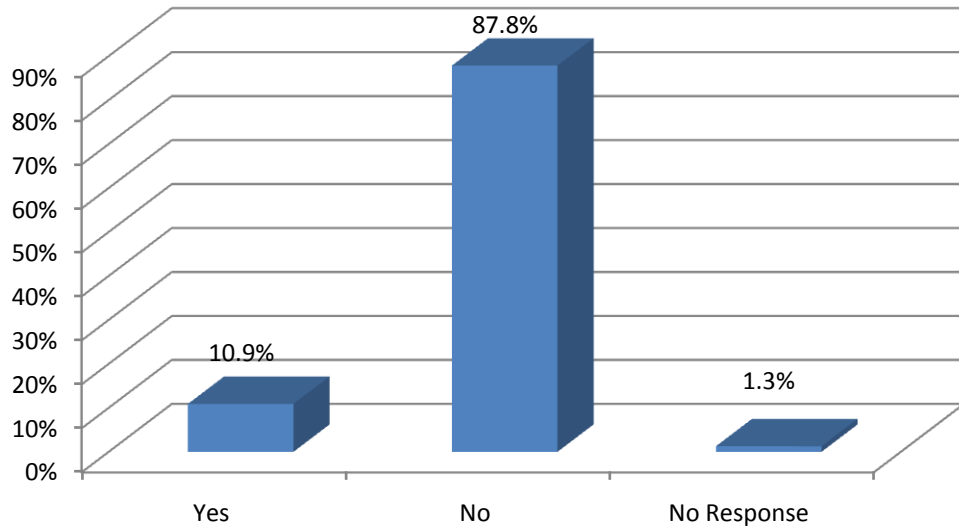
Question 3: Which phase best describes the relationship between you and your city?

On Salary	51%	562
On Contract	41.4%	456
Work as a Volunteer	6.8%	75
No Response	>1%	9



Question 4: Do you serve in the capacity of both judge and clerk in your court?

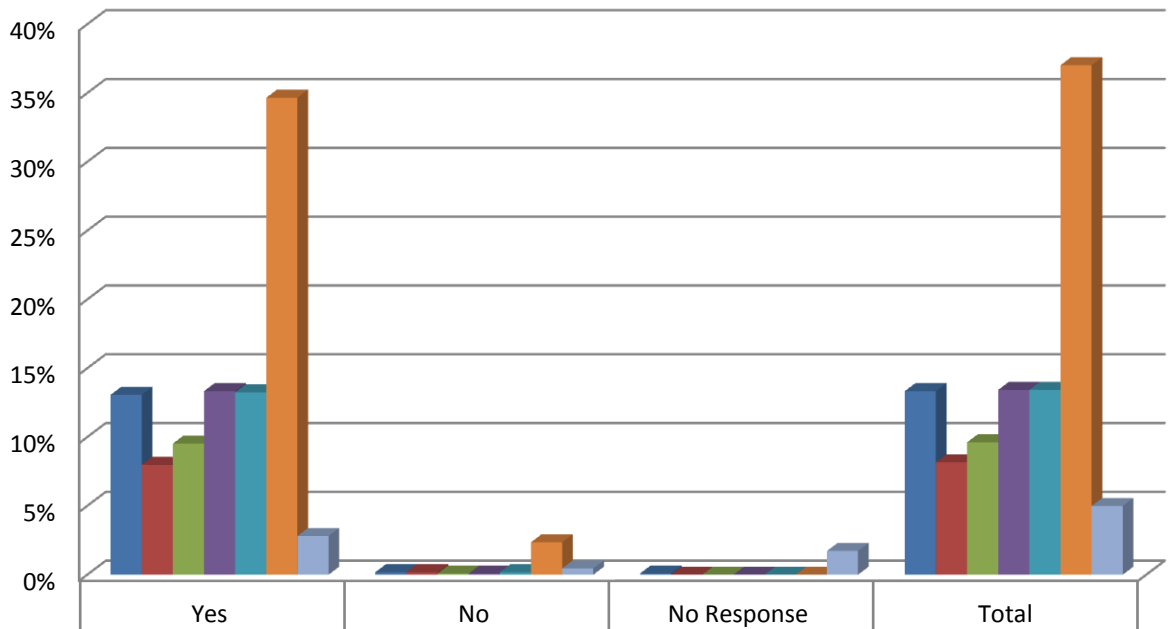
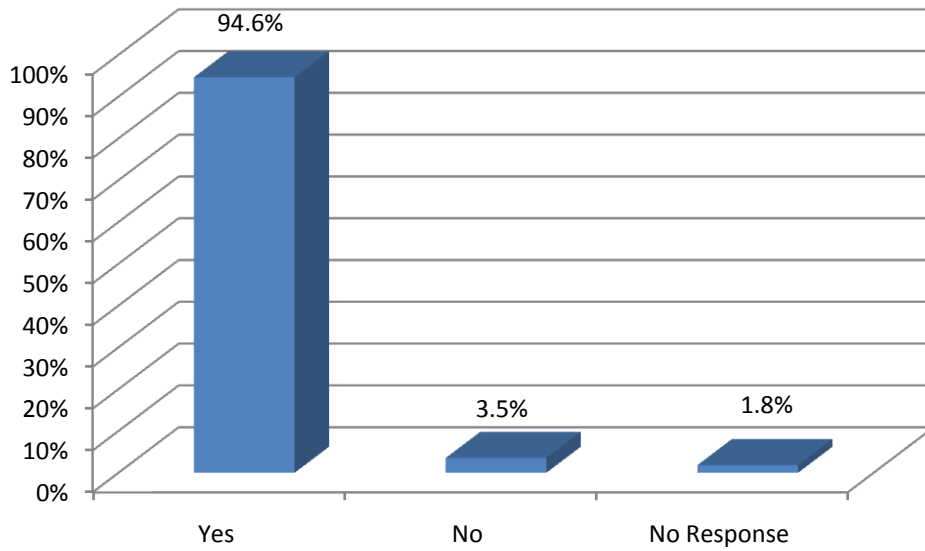
Yes	10.9%	120
No	87.8%	968
No Response	1.3%	14



Category	Yes	No	No Response	Total
Mega	0.0%	13.4%	0.0%	13%
High	0.0%	8.2%	0.0%	8%
Large	0.1%	9.6%	0.0%	10%
Medium	0.5%	12.9%	0.0%	13%
Small	0.9%	12.4%	0.0%	13%
Low	8.7%	28.7%	0.0%	37%
Uncategorized	0.6%	2.6%	1.3%	5%

Question 5: Do you have a municipal prosecutor?

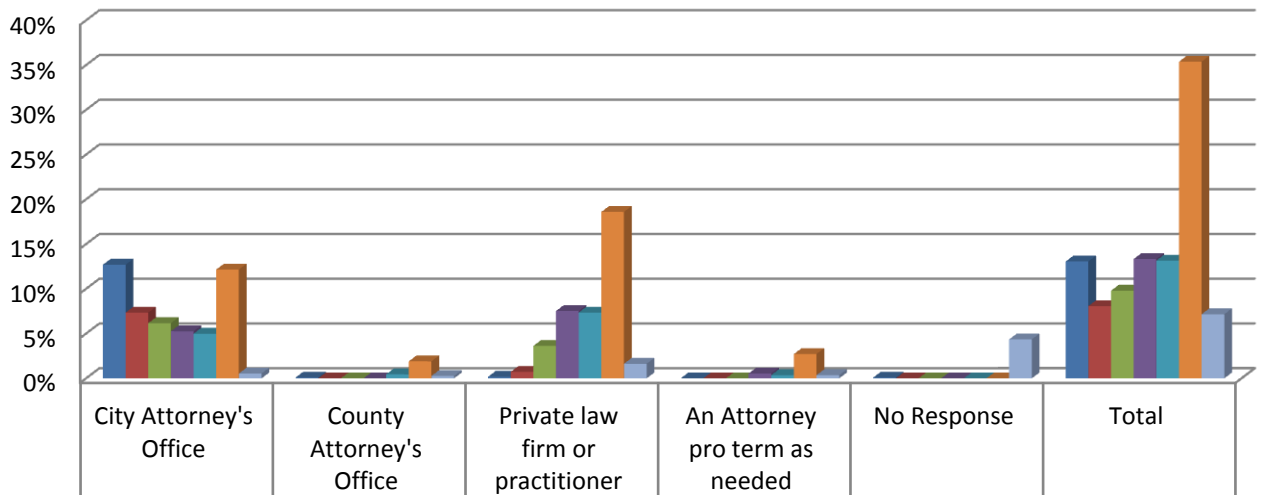
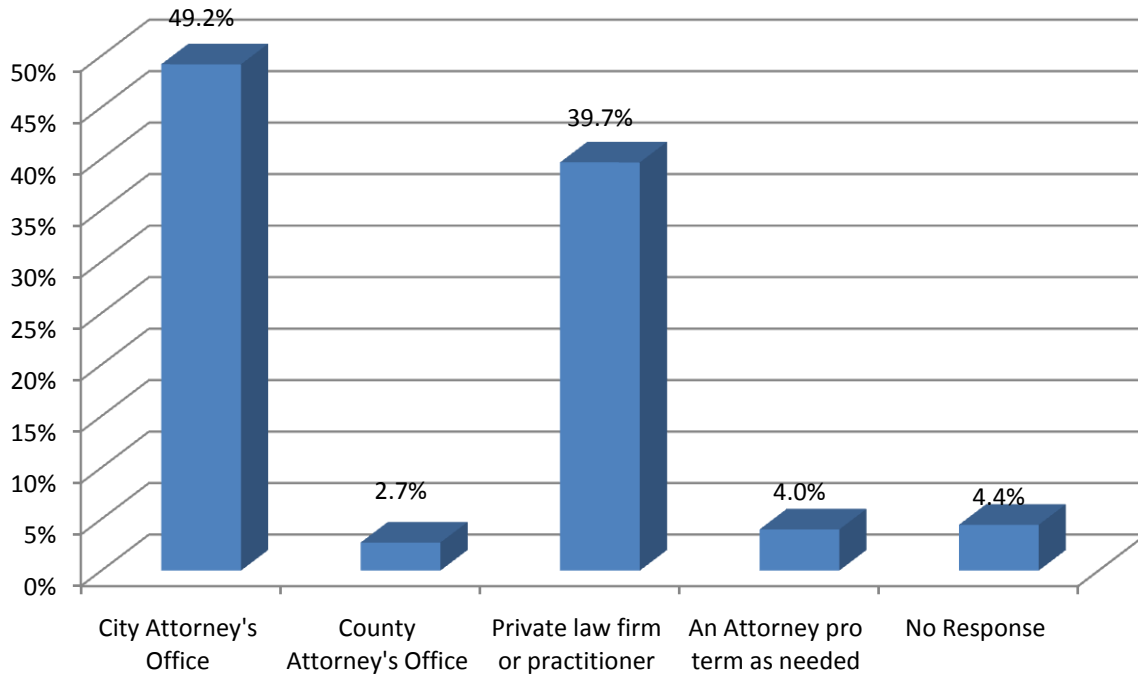
Yes	94.6%	1043
No	3.5%	39
No Response	1.8%	20



Category	Yes	No	No Response	Total
Mega	13.1%	0.2%	0.1%	13%
High	8.0%	0.2%	0.0%	8%
Large	9.5%	0.1%	0.0%	10%
Medium	13.3%	0.1%	0.0%	13%
Small	13.2%	0.2%	0.0%	13%
Low	34.7%	2.4%	0.0%	37%
Uncategorized	2.8%	0.5%	1.7%	5%

Question 6: If you answered "yes" to the above, which of the following best describes who prosecutes in your court?

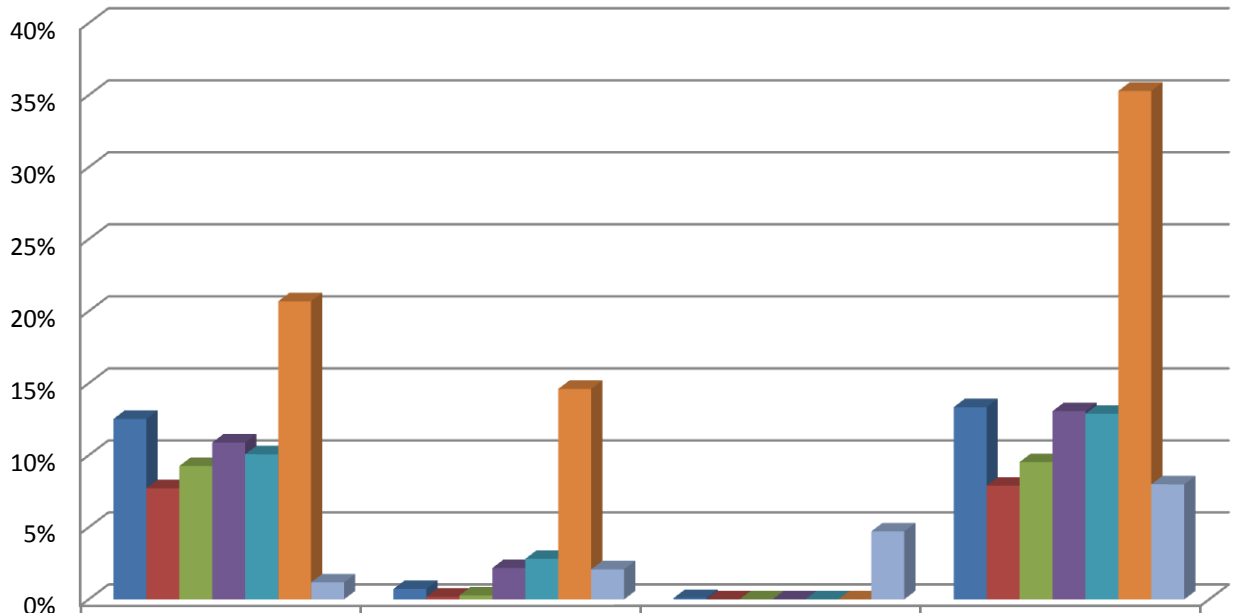
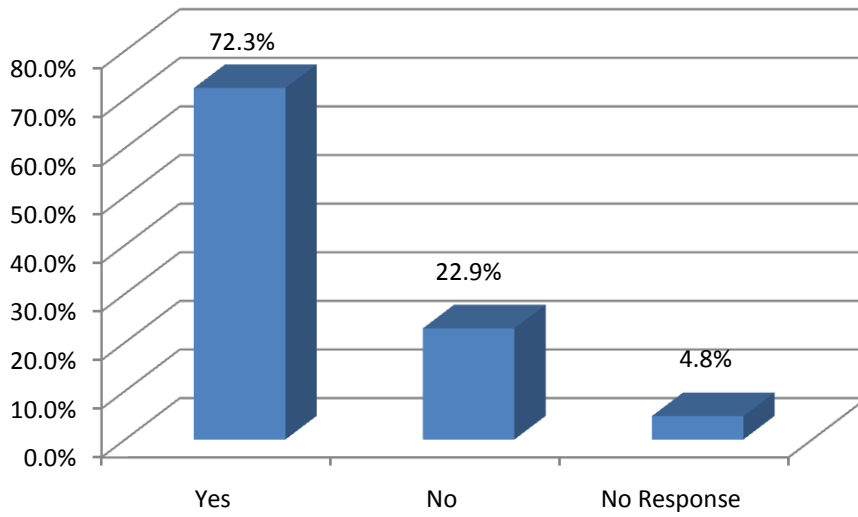
City Attorney's Office	49.2%	542
County Attorney's Office	2.7%	30
Private law firm or practitioner	39.7%	437
An attorney pro tem as needed	4.0%	44
No Response	4.4%	49



	City Attorney's Office	County Attorney's Office	Private law firm or practitioner	An Attorney pro tem as needed	No Response	Total
Mega	12.7%	0.1%	0.2%	0.0%	0.1%	13%
High	7.4%	0.0%	0.7%	0.0%	0.0%	8%
Large	6.2%	0.0%	3.6%	0.0%	0.0%	10%
Medium	5.3%	0.0%	7.5%	0.5%	0.0%	13%
Small	5.0%	0.5%	7.4%	0.4%	0.0%	13%
Low	12.2%	1.9%	18.6%	2.7%	0.0%	35%
Uncategorized	0.5%	0.3%	1.6%	0.4%	4.4%	7%

Question 7: Do you have a courtroom?

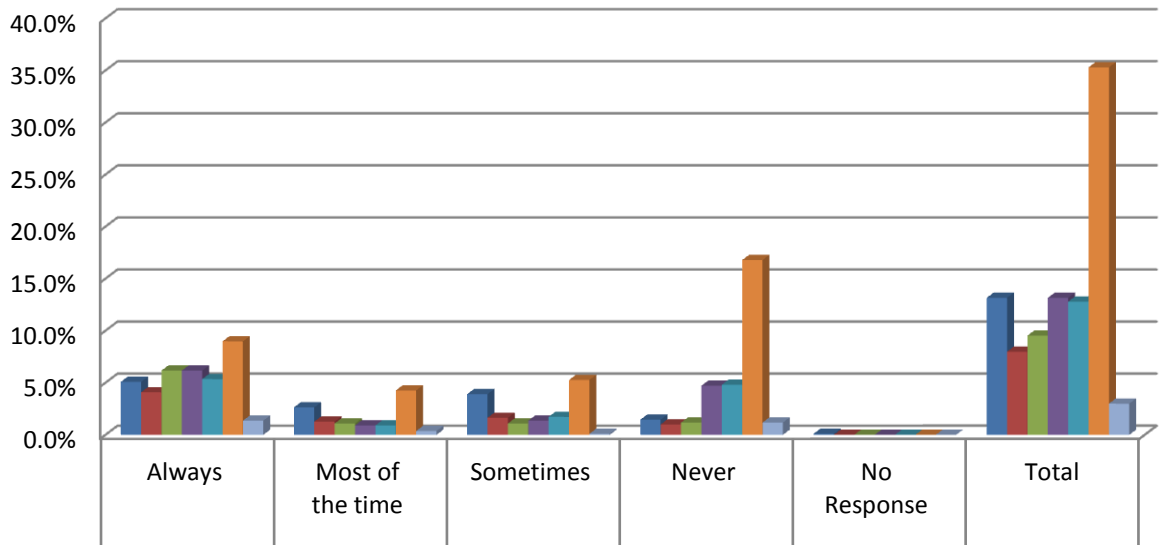
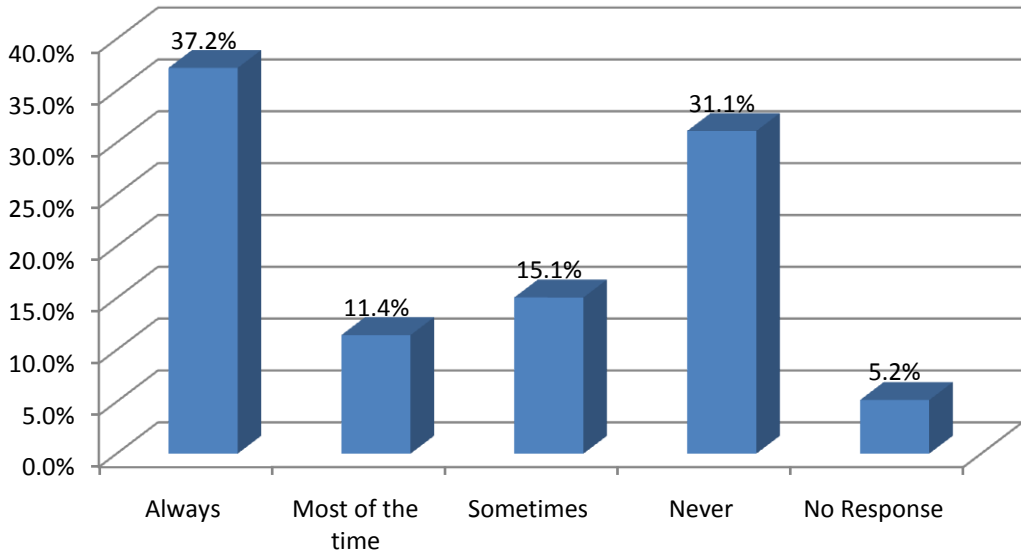
Yes	72.3%	797
No	22.9%	252
No Response	4.8%	53



	Yes	No	No Response	Total
■ Mega	12.5%	0.7%	0.1%	13%
■ High	7.7%	0.2%	0.0%	8%
■ Large	9.3%	0.3%	0.0%	10%
■ Medium	10.9%	2.2%	0.0%	13%
■ Small	10.1%	2.8%	0.0%	13%
■ Low	20.7%	14.6%	0.0%	35%
■ Uncategorized	1.2%	2.1%	4.7%	8%

Question 9: During court proceedings, do you wear a robe?

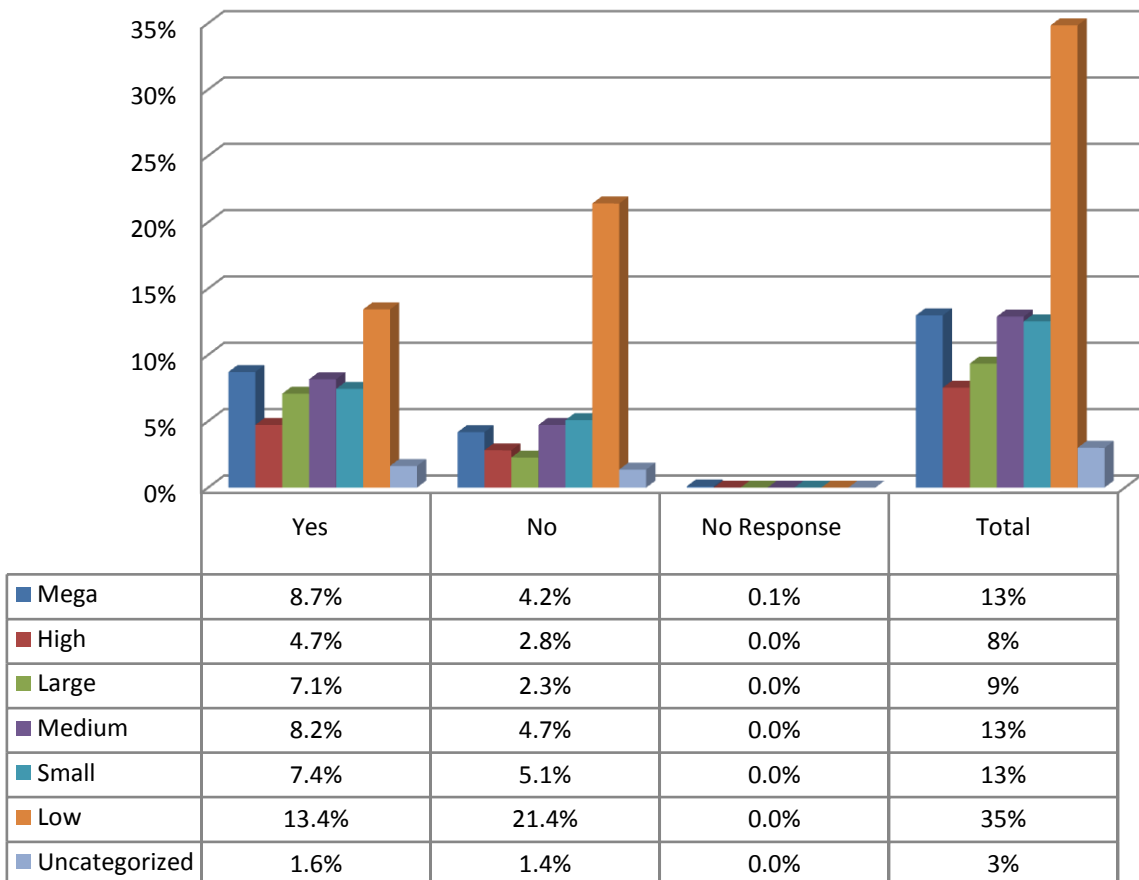
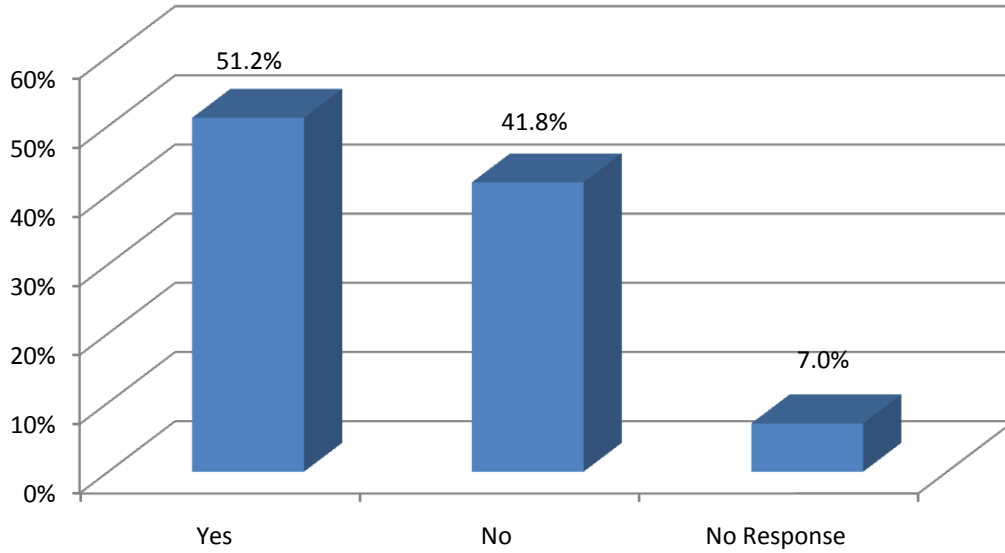
Always	37.2%	410
Most of the time	11.4%	126
Sometimes	15.1%	166
Never	31.1%	343
No Response	5.2%	57



	Always	Most of the time	Sometimes	Never	No Response	Total
■ Mega	5.1%	2.6%	3.9%	1.5%	0.1%	13%
■ High	4.1%	1.3%	1.6%	1.0%	0.0%	8%
■ Large	6.2%	1.1%	1.1%	1.2%	0.0%	10%
■ Medium	6.2%	0.9%	1.4%	4.7%	0.0%	13%
■ Small	5.4%	0.9%	1.7%	4.8%	0.0%	13%
■ Low	9.0%	4.3%	5.3%	16.8%	0.0%	35%
■ Uncategorized	1.4%	0.4%	0.1%	1.2%	0.0%	3%

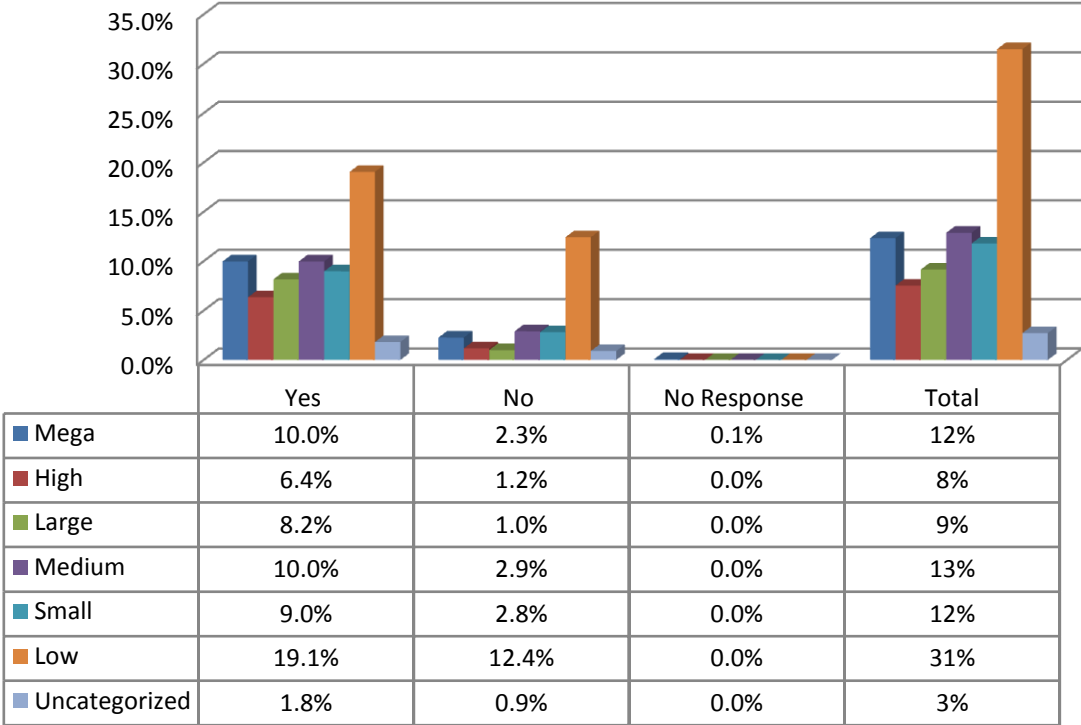
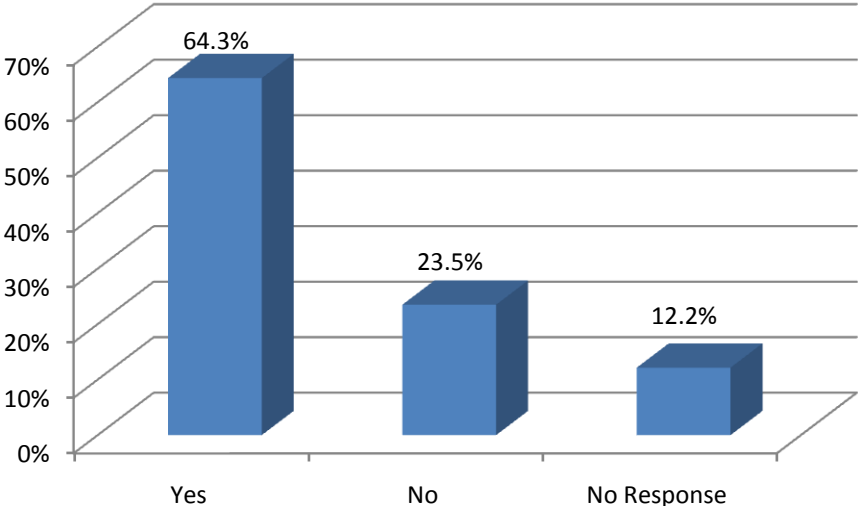
Question 11: Do you have posted or written rules of decorum in your courtroom?

Yes	51.2%	564
No	41.8%	461
No Response	6.9%	76



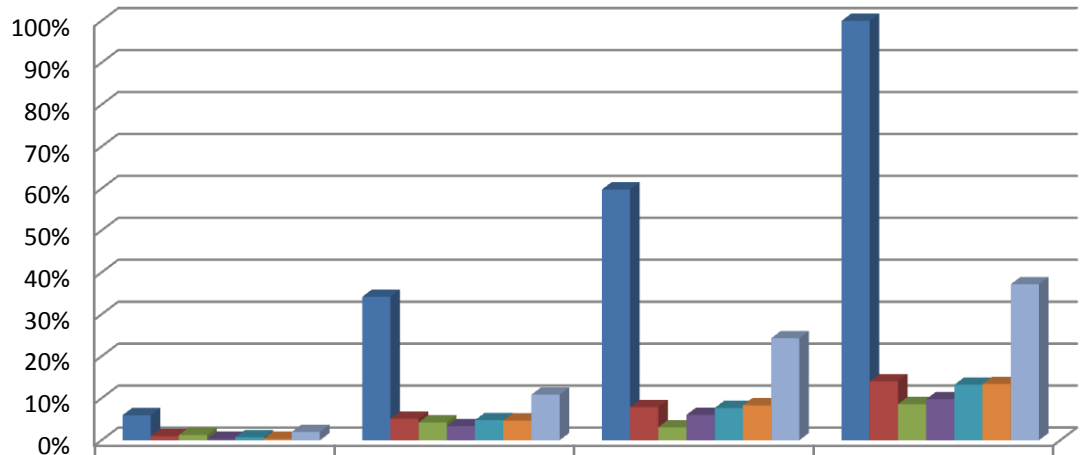
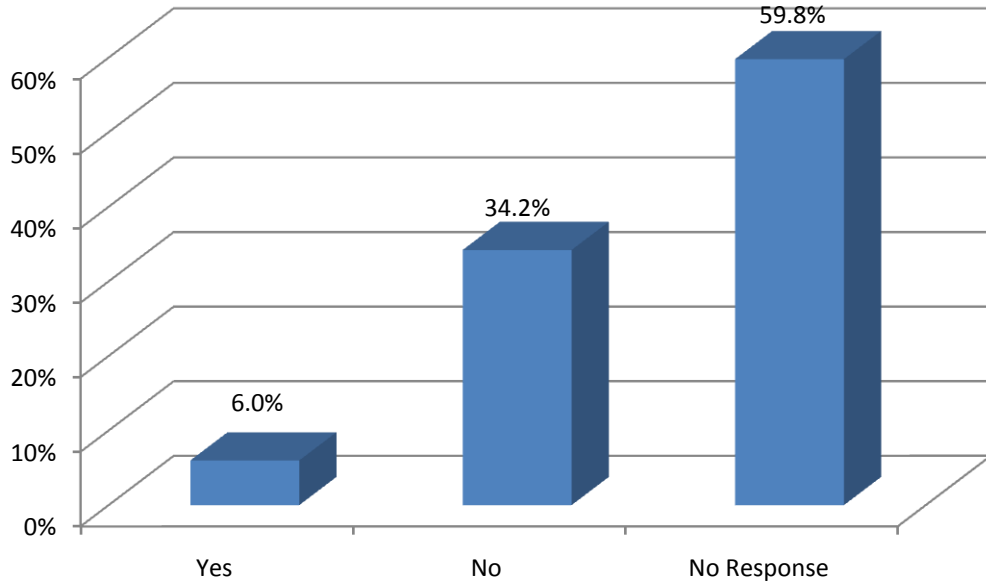
Question 12: If you have a bailiff, does he or she request all to rise and announce that the court is in session?

Yes	64.3%	709
No	23.5%	259
No Response	12.2%	134



Question 13: As a condition of bail do you require accused persons with no prior convictions from DWI to have an ignition?

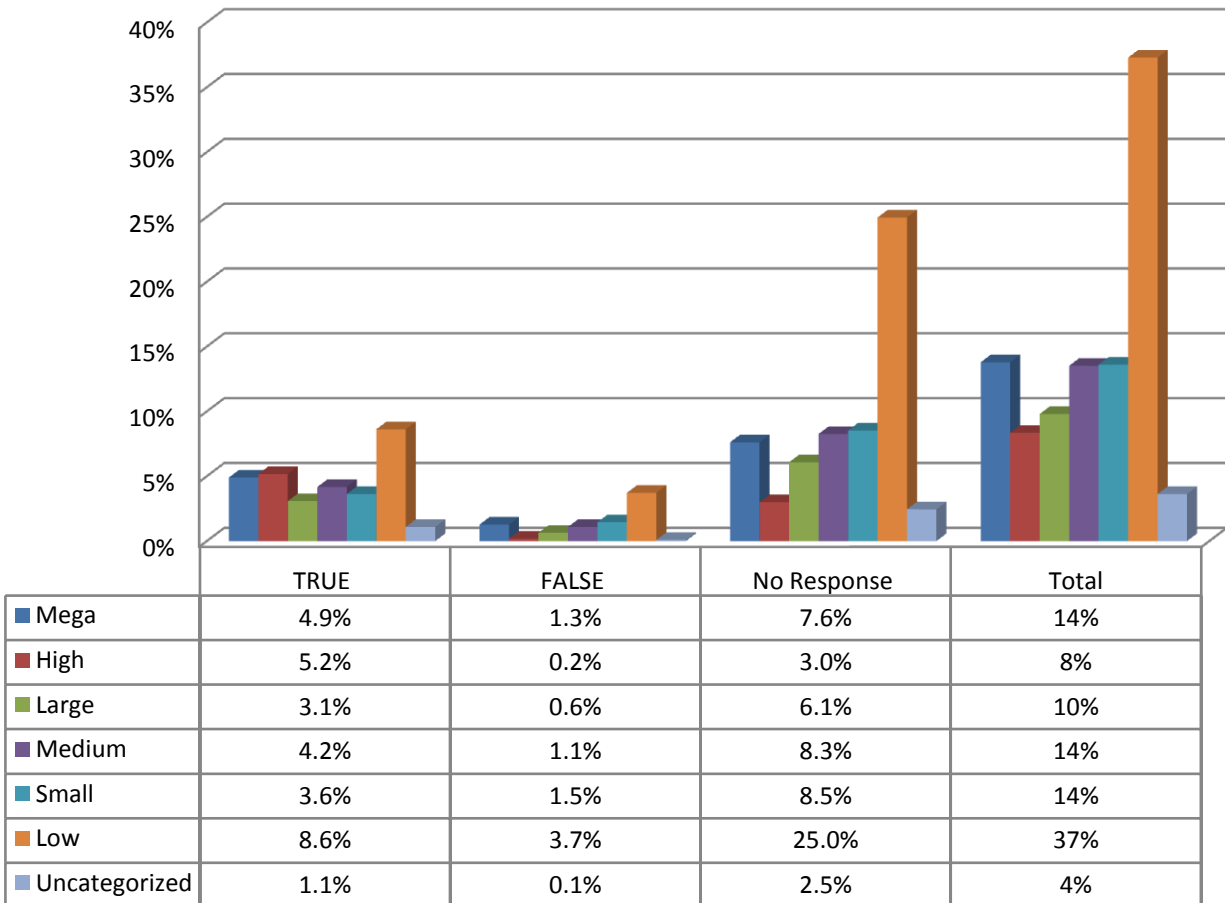
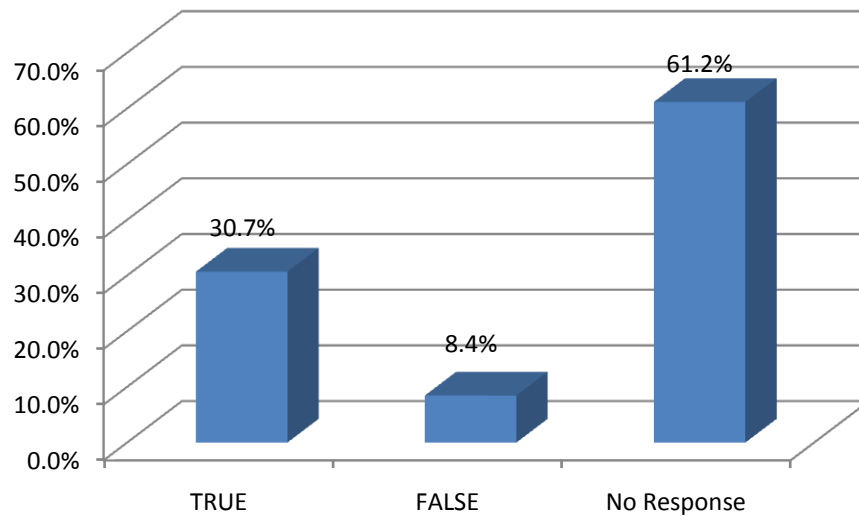
Yes	5.9%	65
No	34.1%	376
No Response	59.9%	660



	Yes	No	No Response	Total
■ Mega	6.0%	34.2%	59.8%	100%
■ High	1.0%	5.2%	7.9%	14%
■ Large	1.3%	4.3%	3.1%	9%
■ Medium	0.4%	3.4%	6.1%	10%
■ Small	0.7%	4.8%	7.7%	13%
■ Low	0.4%	4.7%	8.3%	13%
■ Uncategorized	2.0%	10.9%	24.3%	37%

Question 14: True or False: the charge is a second DWI, the magistrate shall require that the defendant have installed on the motor vehicle owned or most regularly operated by the defendant a vehicle ignition interlock device.

True	30.7%	338
False	8.4%	93
No Response	61.2%	674



Question 15: Under Texas law, a magistrate may not require installation of an ignition interlock device if to do so would not be in the best interest of justice. In cases involving a second DWI, have you determined that installation of an ignition interlock device is not in the best interest of justice?

Yes, I never order the installation of an ignition interlock device.

6% 66

Yes, I sometimes do not order the installation of an ignition interlock device.

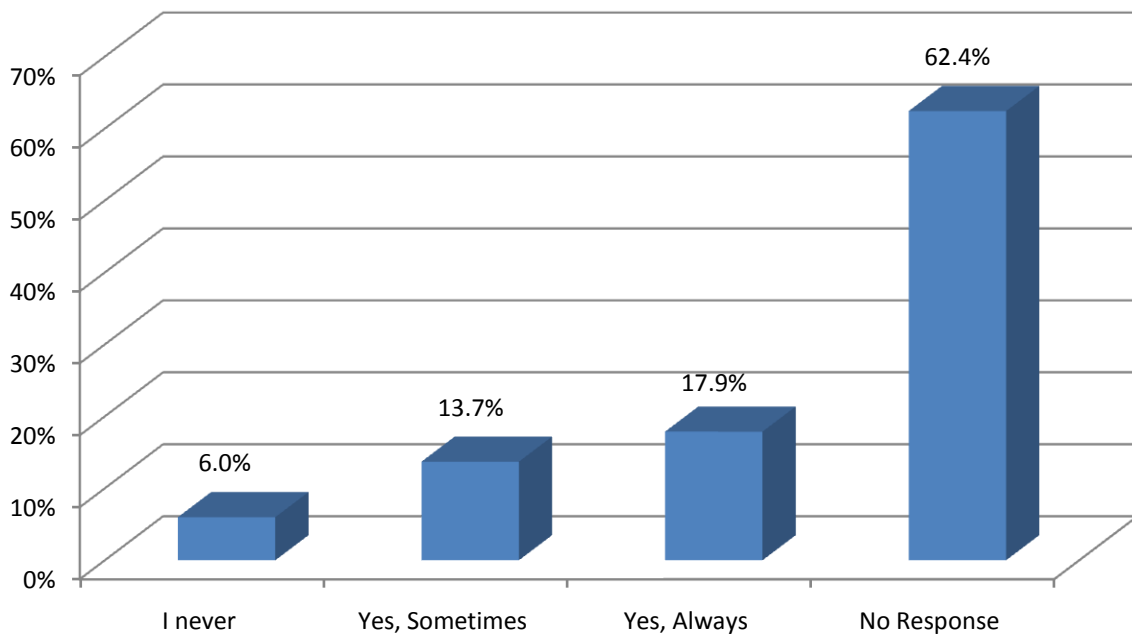
13.7% 151

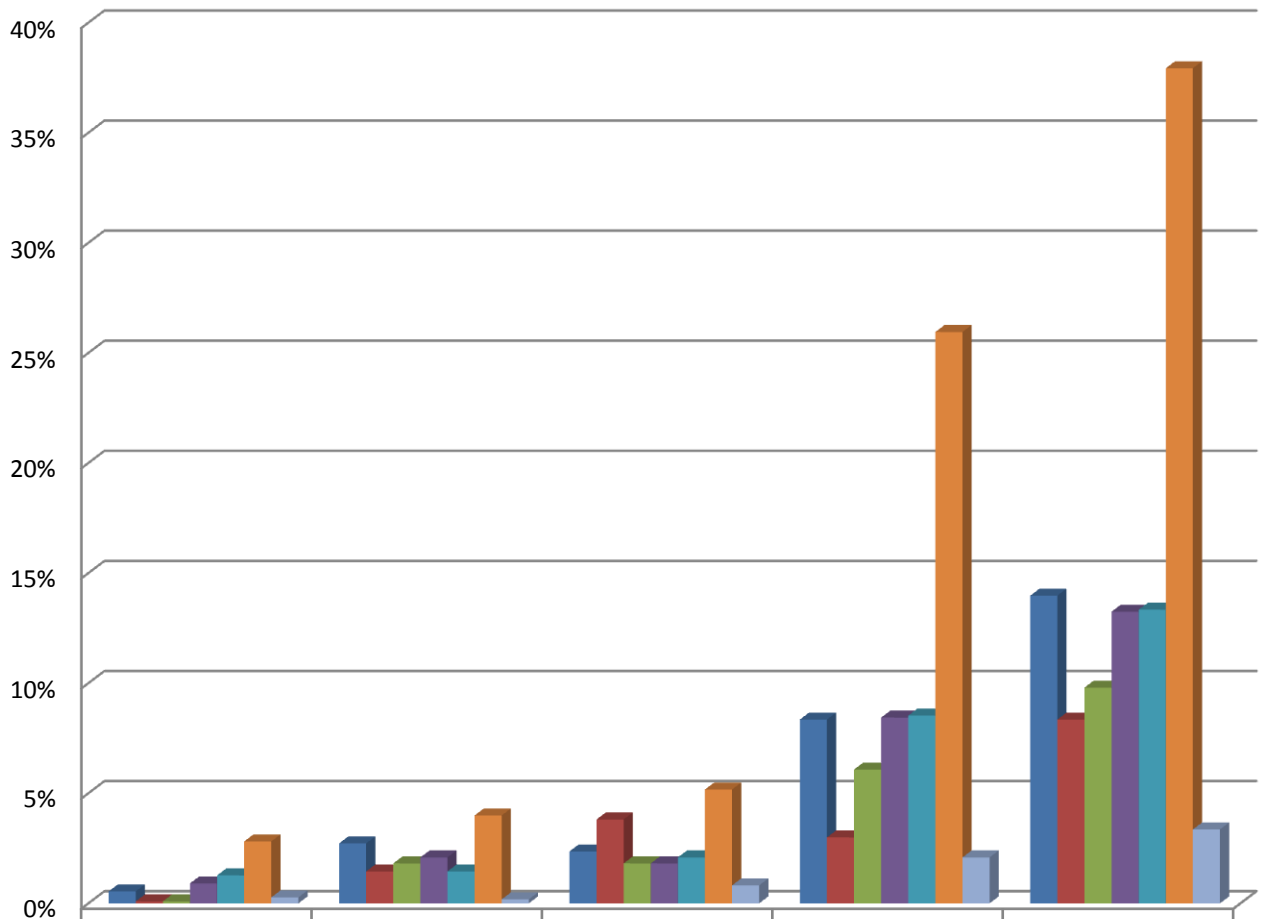
No, in such instances, I always order the installation of an ignition interlock device.

17.9% 197

No Response.

62.4% 688

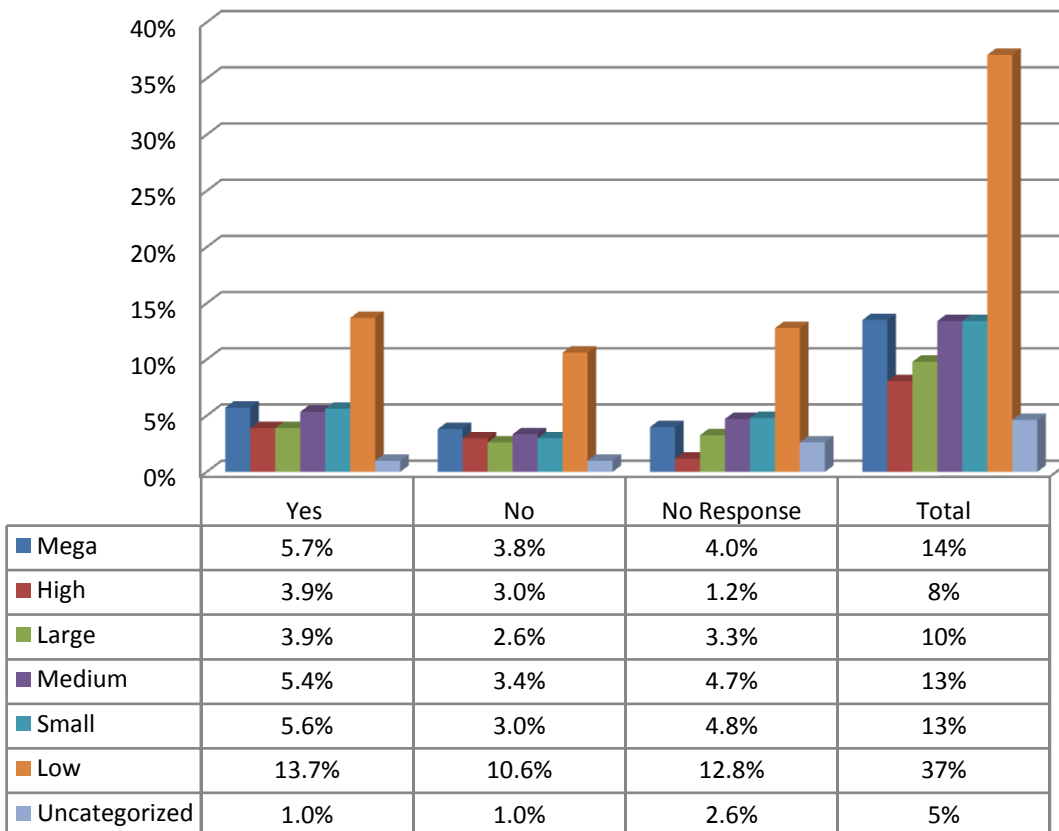
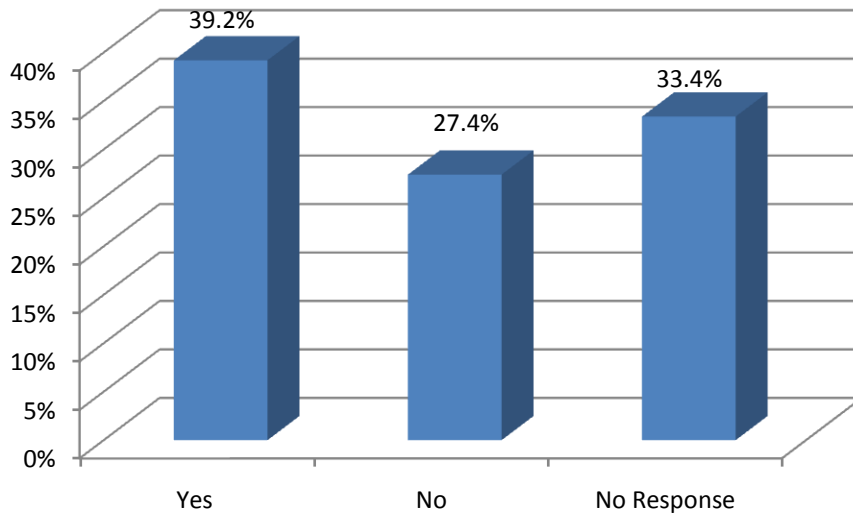




	I never	Yes, Sometimes	Yes, Always	No Response	Total
Mega	0.5%	2.7%	2.4%	8.3%	14%
High	0.1%	1.5%	3.8%	3.0%	8%
Large	0.1%	1.8%	1.8%	6.1%	10%
Medium	0.9%	2.1%	1.8%	8.4%	13%
Small	1.3%	1.5%	2.1%	8.5%	13%
Low	2.8%	4.0%	5.2%	26.0%	38%
Uncategorized	0.3%	0.2%	0.8%	2.1%	3%

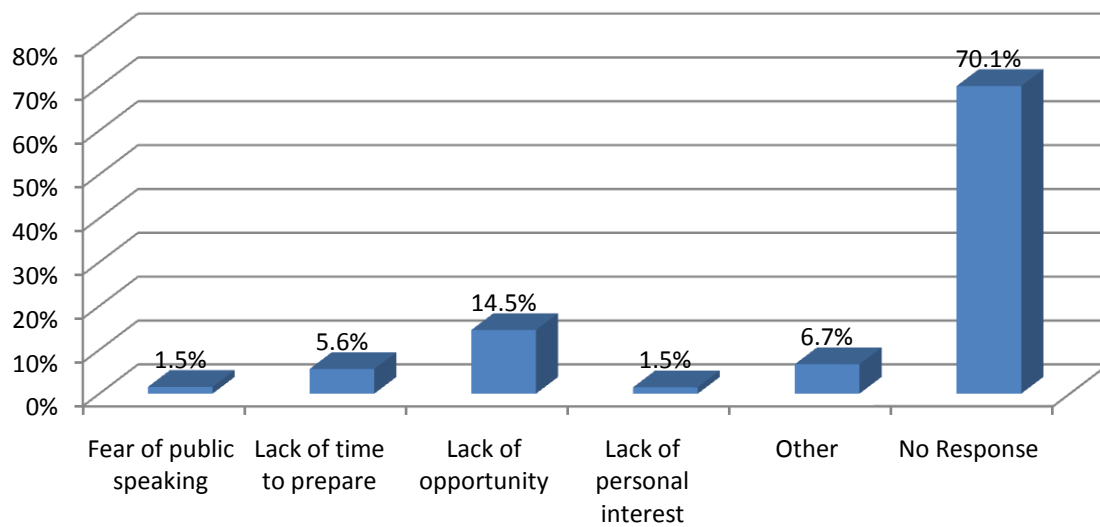
Question 16: In your role as a municipal judge, do you engage in public outreach to schools, non-profit organizations, and other civic organizations?

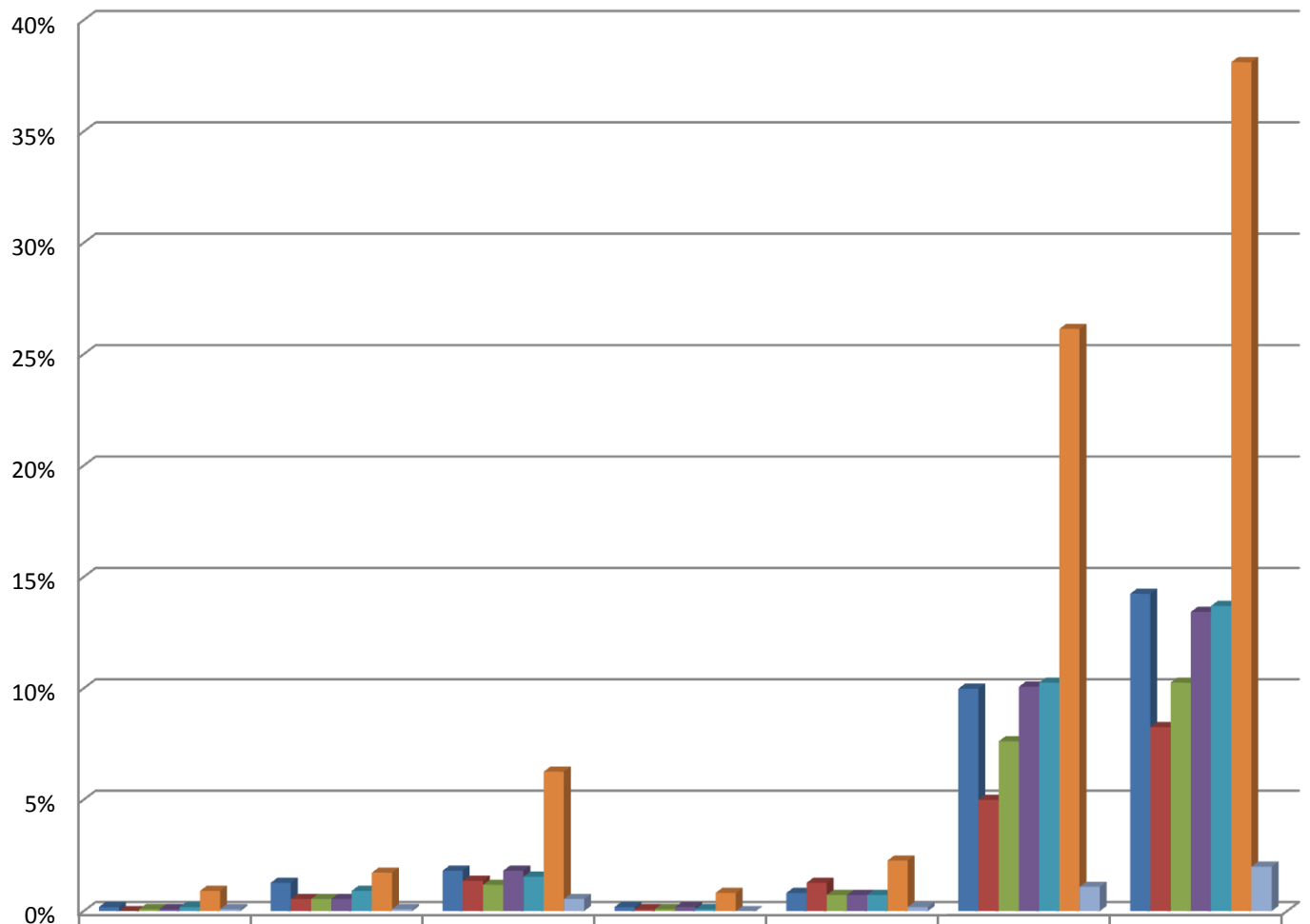
Yes 39.2% 420
No 27.4% 299
No Response 33.4% 363



Question 18: Only if you answered "No" to question 16, which of the following describes why you do not engage in public outreach?

Fear of public speaking	1.5%	17
Lack of time to prepare	5.6%	62
Lack of opportunity	14.5%	160
Lack of personal interest	1.5%	16
Other	6.7%	74
No Response	70.1%	773





	Fear of public speaking	Lack of time to prepare	Lack of opportunity	Lack of personal interest	Other	No Response	Total
■ Mega	0.2%	1.3%	1.8%	0.2%	0.8%	10.0%	14%
■ High	0.0%	0.5%	1.4%	0.1%	1.3%	5.0%	8%
■ Large	0.1%	0.5%	1.2%	0.1%	0.7%	7.6%	10%
■ Medium	0.1%	0.5%	1.8%	0.2%	0.7%	10.1%	13%
■ Small	0.2%	0.9%	1.5%	0.1%	0.7%	10.3%	14%
■ Low	0.9%	1.7%	6.3%	0.8%	2.3%	26.1%	38%
■ Uncategorized	0.1%	0.1%	0.5%	0.0%	0.2%	1.1%	2%